

Proven benefits to providers and patients

Saves your clinician's time.

Forget making signs that take up time or going back to the nurses' station for decals.



WEAR GOWN & GLOVES

Manages risk.

ADA-compliant. Uses universal hazard, color-coding and other patient safety symbols. Clearly informs visitors and staff.

Green-friendly and cost-efficient.

Durable, laminated tabbed inserts. Nothing to throw away or restock.

Custom fit.

Designed to match your needs. Incorporates room numbers, Braille and the hospital's corporate identity.

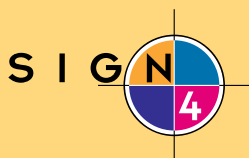


Quick turn-around on any order!
Call us today at (502) 582-2000.



ISO SIGN[™]
INFECTION CONTROL SIGNAGE

A patent-pending product of Sign4



(502) 582-2000
theisosign.com
913 East Main St.
Louisville, KY 40206
fax (502) 582-2077

ISO SIGN[™]
INFECTION CONTROL SIGNAGE

A smart sign system...

that supports your
infection control program.



ISO SIGN™

ISOSIGN is a hospital isolation sign solution developed by providers like you. With it, a nurse or other clinician can assemble the right signage for any patient room... right on the spot in seconds.

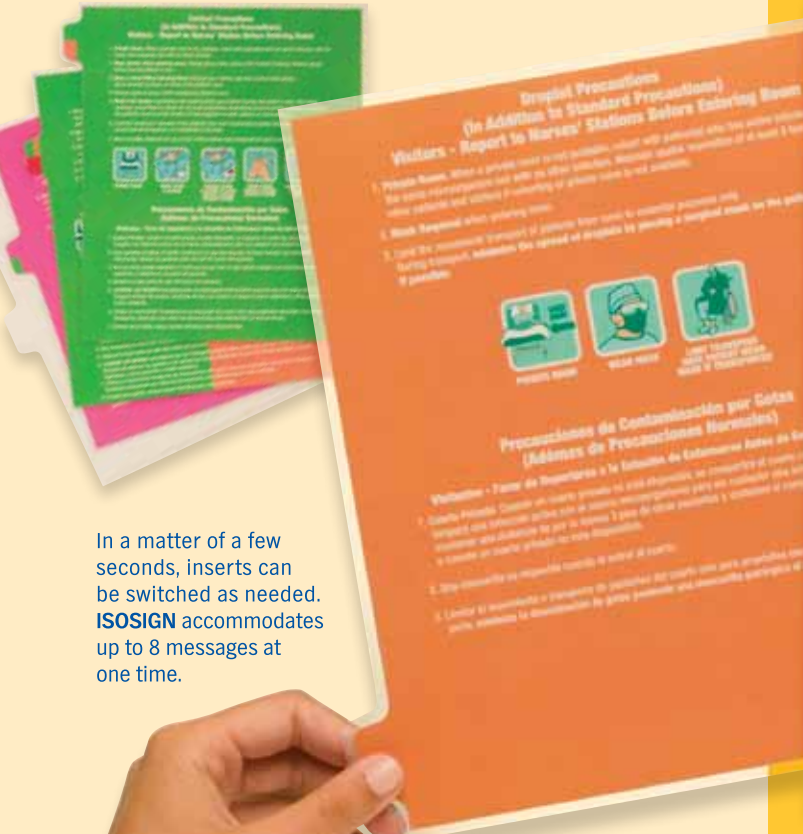
The **ISOSIGN** is a 1/8" thick non-glare acrylic frame with a side slot for housing durable, laminated, 8" x 10" tabbed inserts. Each color-coded insert describes the safety precautions that apply to the patient's room; e.g., airborne contaminants, contact and droplet, etc.

Instead of looking for signs that take you away from doing your job, let **ISOSIGN** give you a professional look that saves time, is flexible and easy to use.



BEFORE

AFTER



In a matter of a few seconds, inserts can be switched as needed. **ISOSIGN** accommodates up to 8 messages at one time.



Quick turn-around on any order.
Call us today!
(502) 582-2000

There are two add-on options.

ISO PLUS™

ISOPLUS offers a second, smaller slot for hazard or other precaution inserts. Custom inserts can be made to fit your needs.



ISO COMPLETE™

ISOCOMPLETE offers a panel for room numbers and Braille along with the hospital's name and logo.

